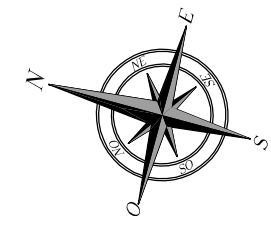
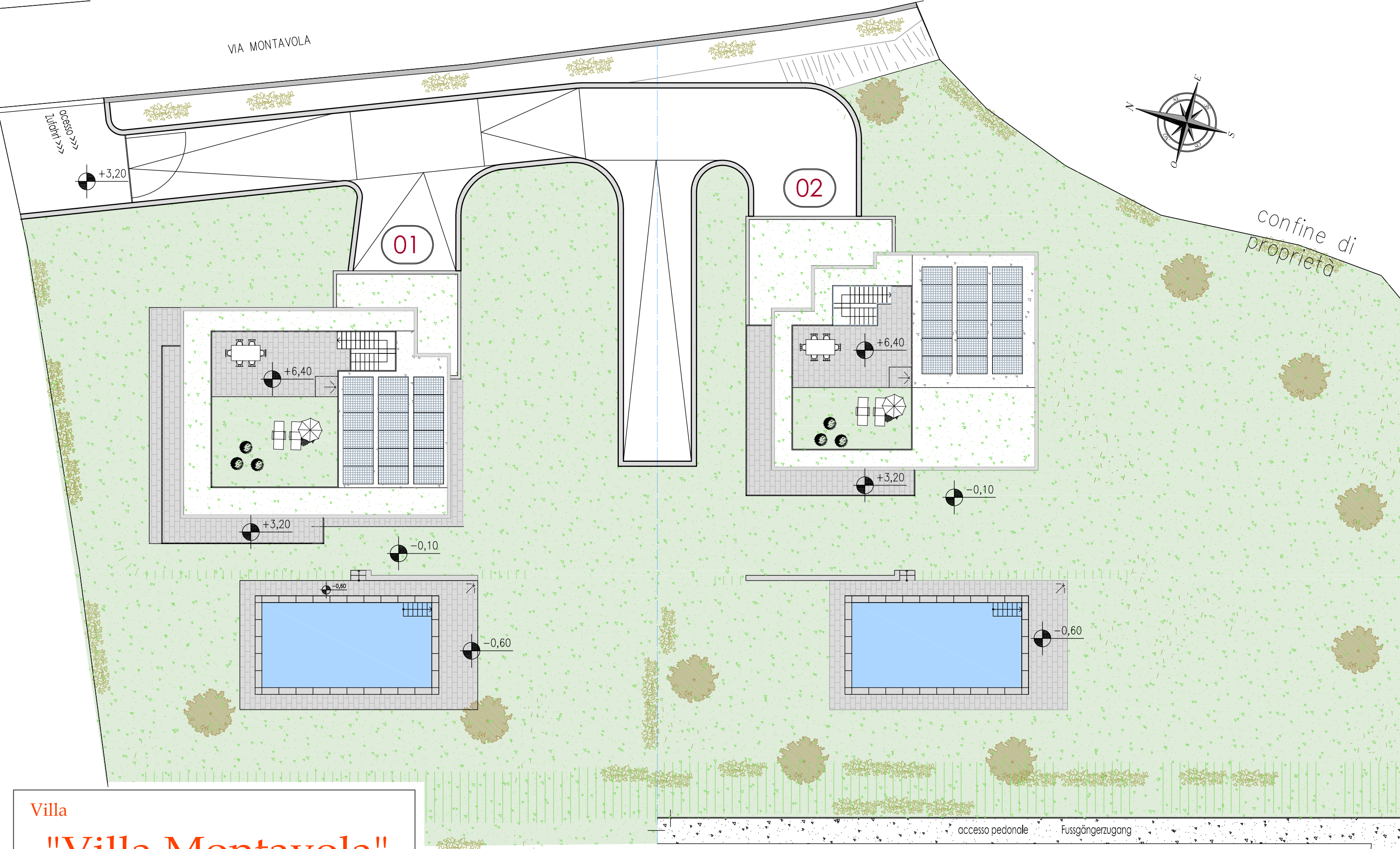


VIA MONTAVOLA



confine di proprietà



01

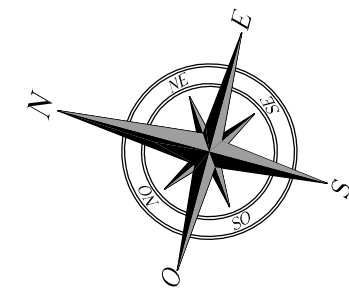
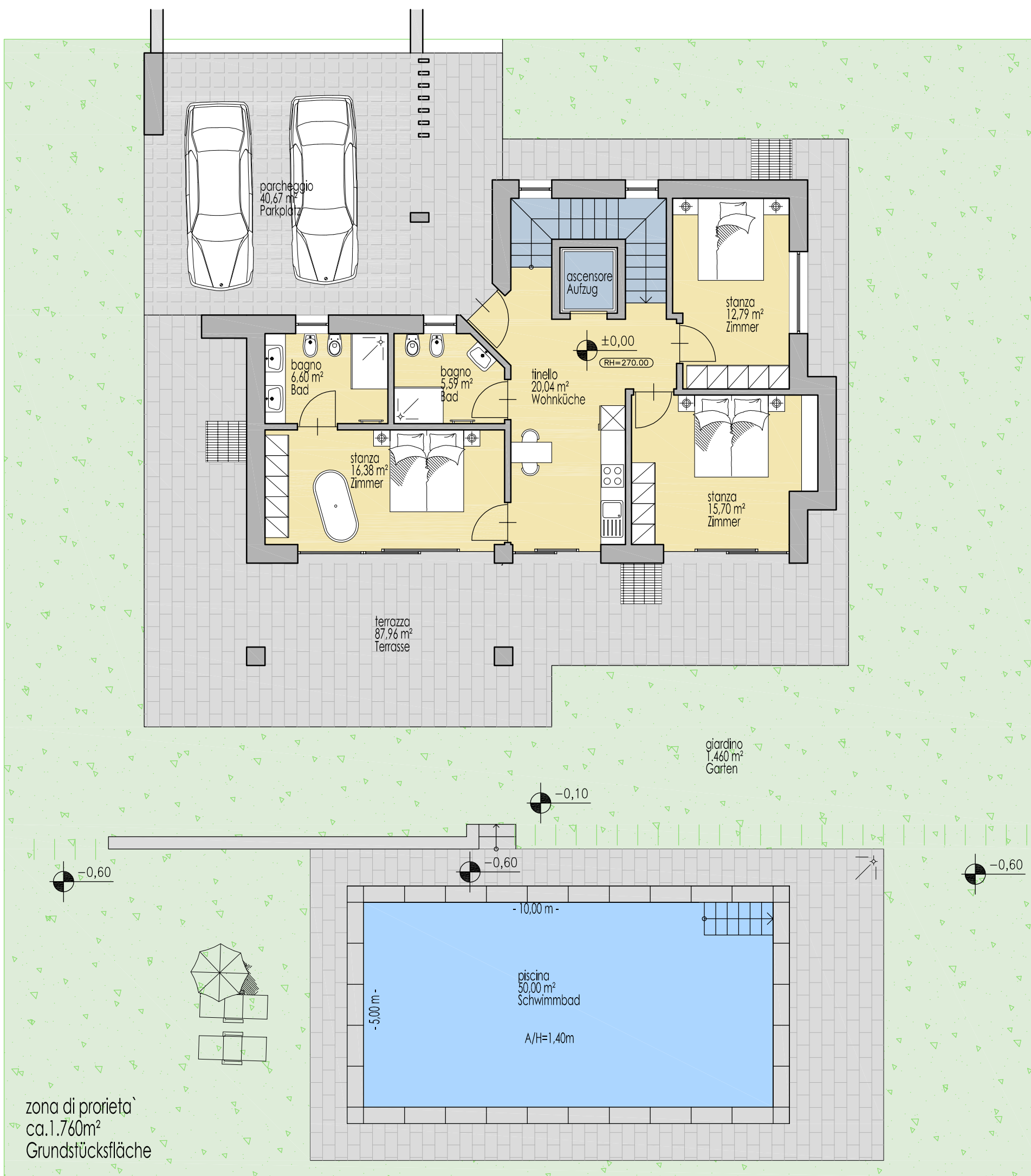
02

Villa
"Villa Montavola"
 Bardolino

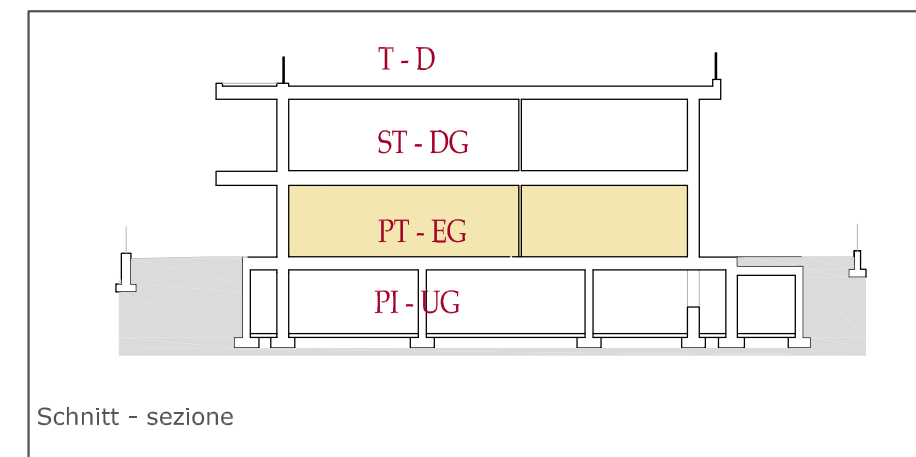
LP - PL
 1:200

Planimetria - Lageplan

accesso pedonale Fussgängerzugang



Piano terra - Erdgeschoss



Schnitt - sezione

Villa

"Montavola"

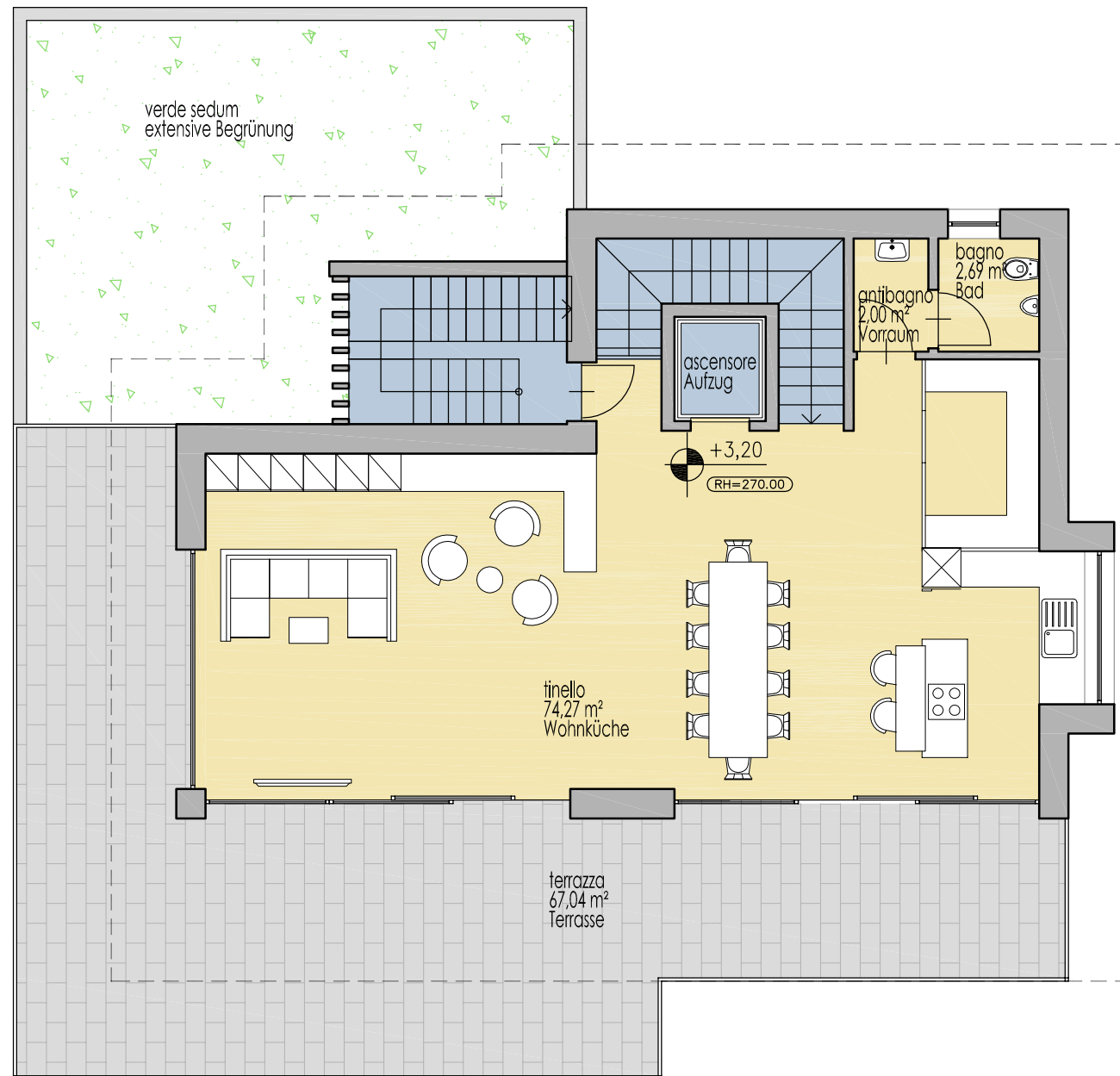
Bardolino

EG - PT
1:100

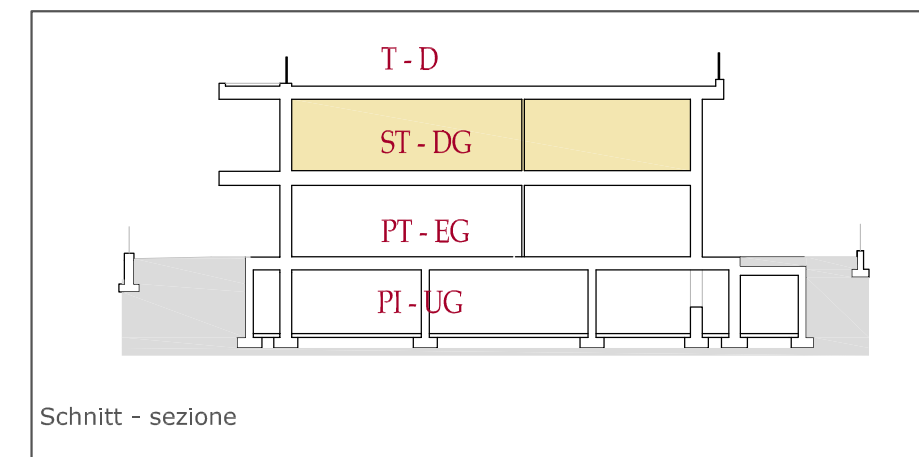
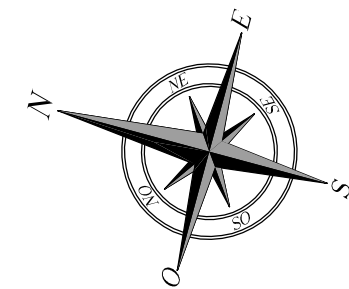


Beschreibung descrizione		Nutzfläche superficie netta	Verkaufsfläche sup. vendita
Villa	Nr. N°	156,06m ²	585,84m ²

02



Sottotetto - Dachgeschoss



Schnitt - sezione

Villa

"Montavola"

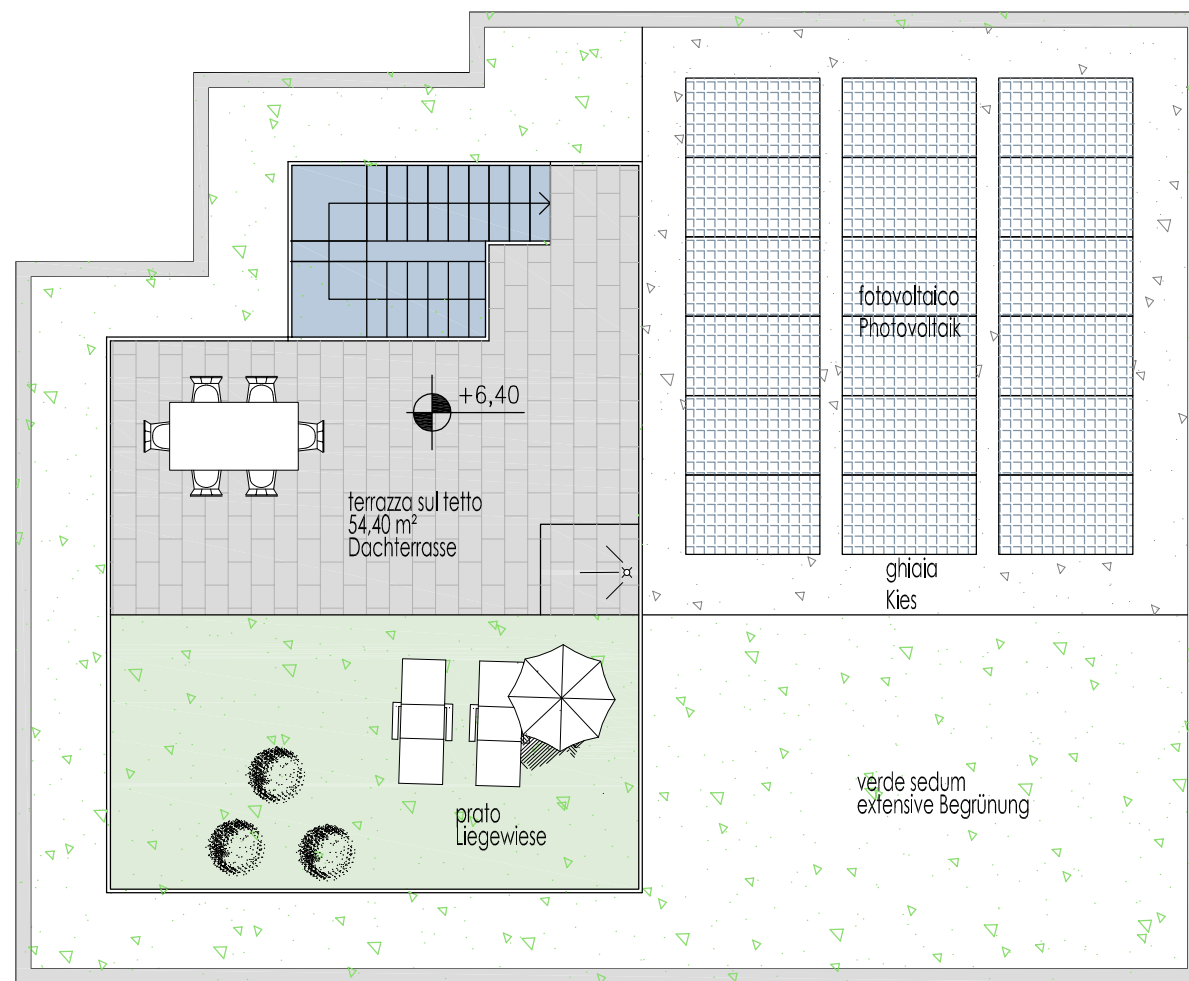
Bardolino

DG - ST
1:100

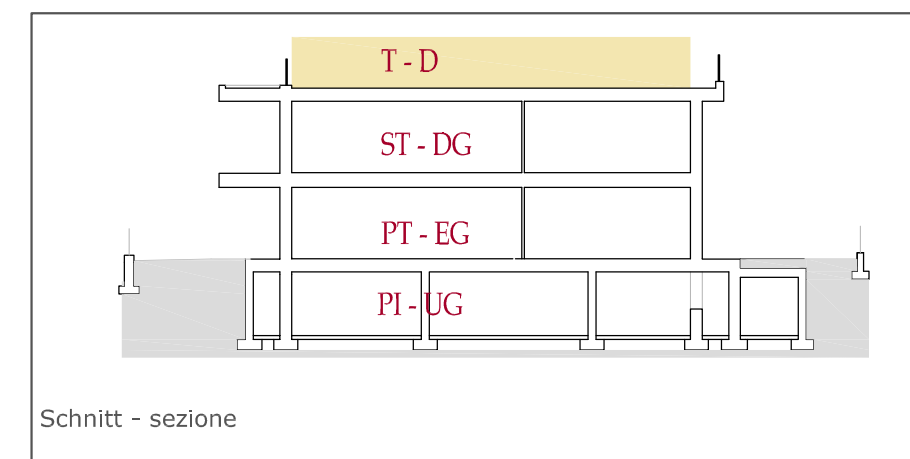
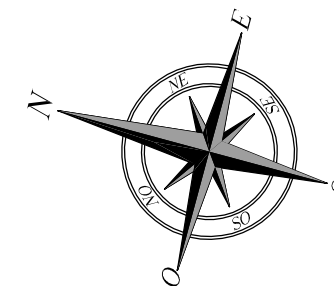


Beschreibung descrizione	Nutzfläche superficie netta	Verkaufsfläche sup. vendita
Villa Nr. N°	156,06m ²	585,84m ²

02



Tetto - Dach



Schnitt - sezione

Villa

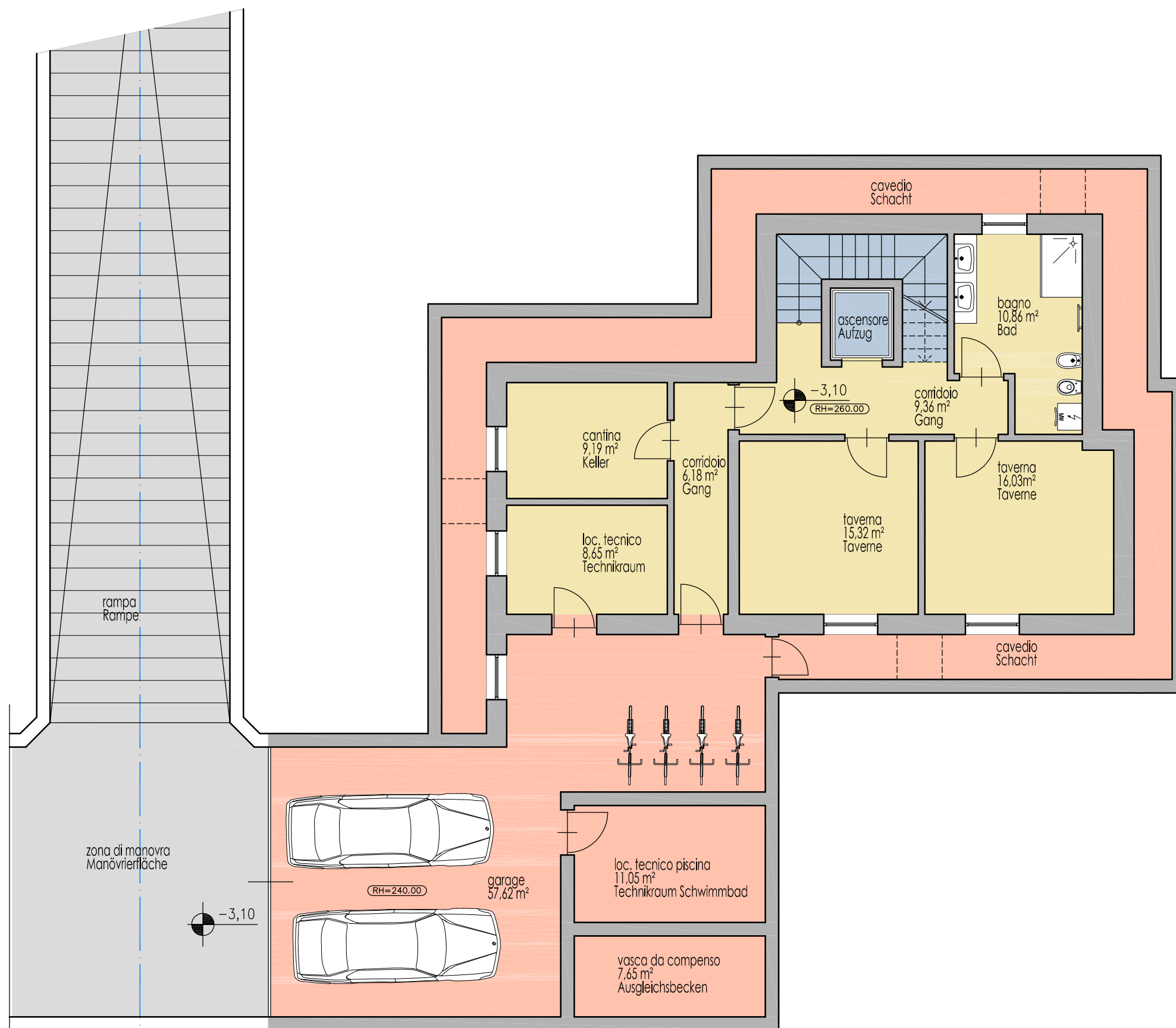
"Montavola"

Bardolino

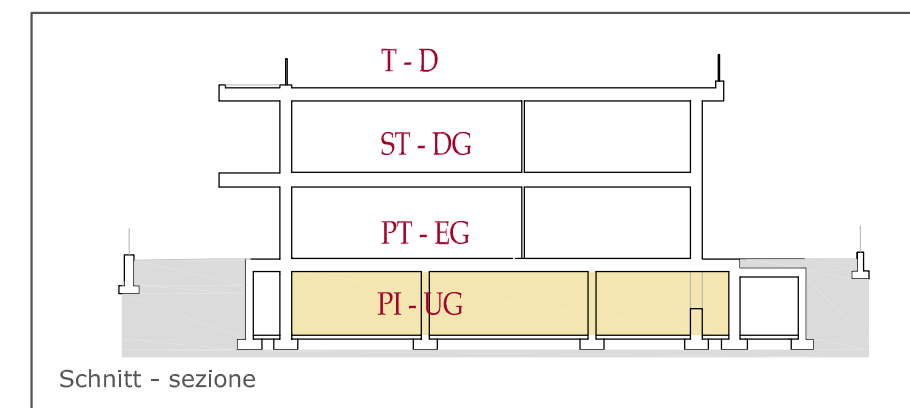
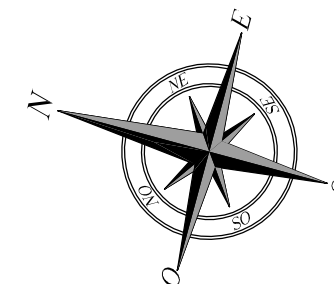
D - T
1:100



Beschreibung descrizione	Nutzfläche superficie netta	Verkaufsfläche sup. vendita
Villa	Nr. N°	
	02	
	156,06m ²	585,84m ²



Piano interato - Untergeschoss



Villa

"Montavola"

Bardolino

UG - PI
1:100

Beschreibung descrizione	Nutzfläche superficie netta	Verkaufsfläche sup. vendita
Villa Nr. N°	156,06m ²	585,84m ²

02