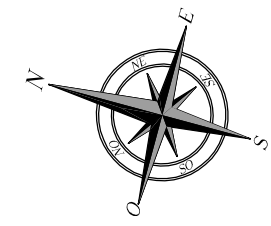
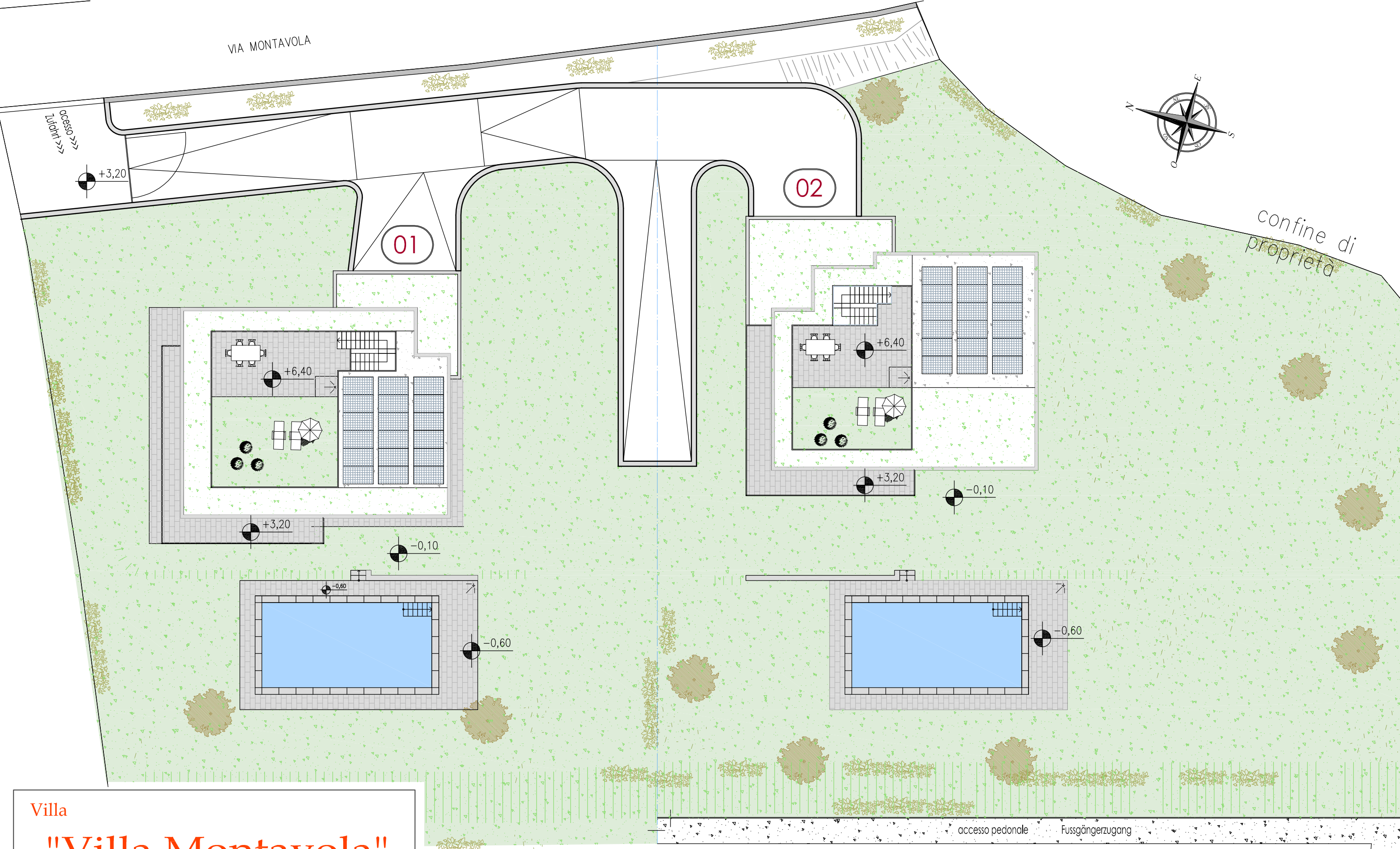


VIA MONTAVOLA



confine di proprietà



01

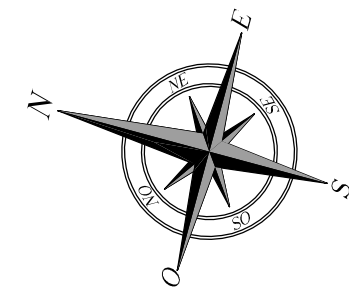
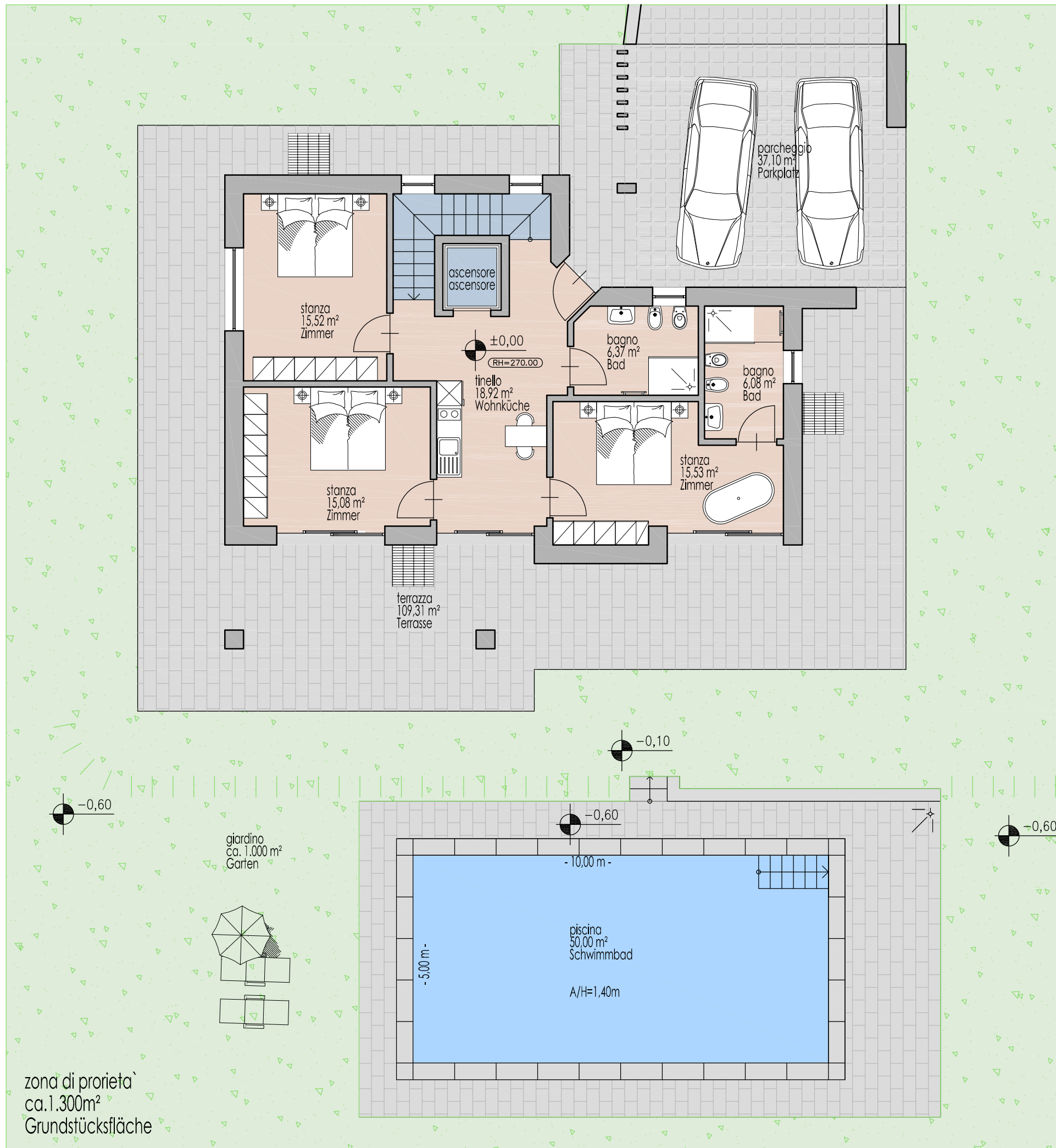
02

Villa
"Villa Montavola"
 Bardolino

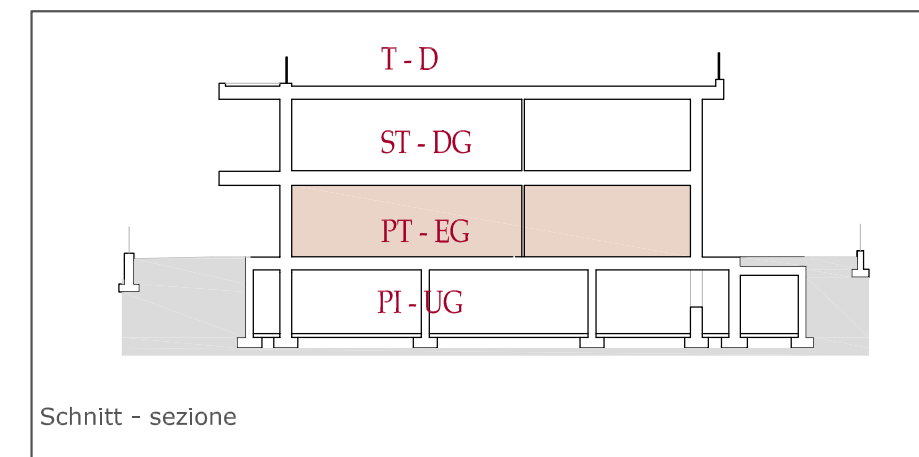
LP - PL
 1:200

Planimetria - Lageplan

accesso pedonale Fussgängerzugang



Piano terra - Erdgeschoss



Schnitt - sezione

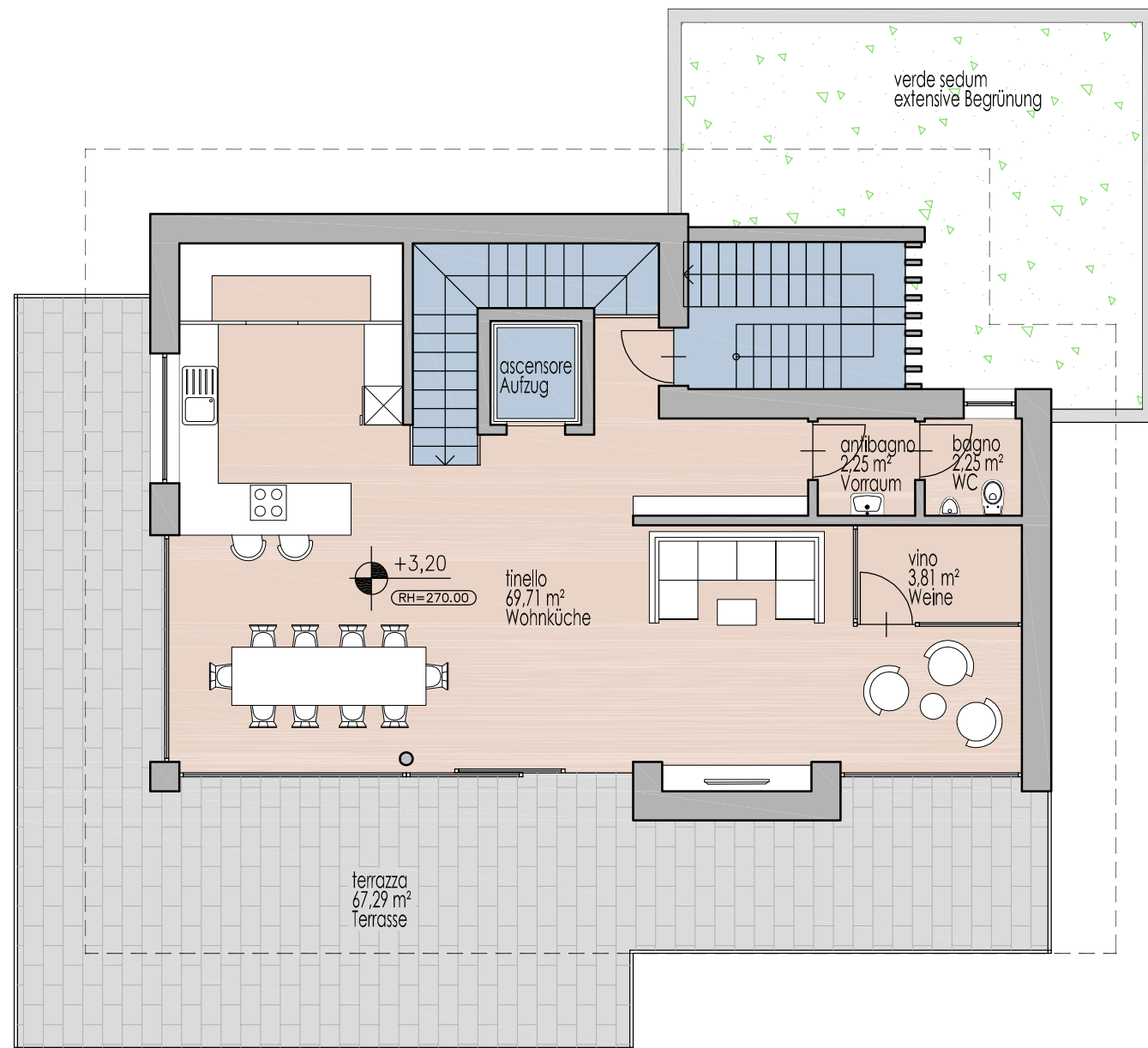
Villa

"Montavola"

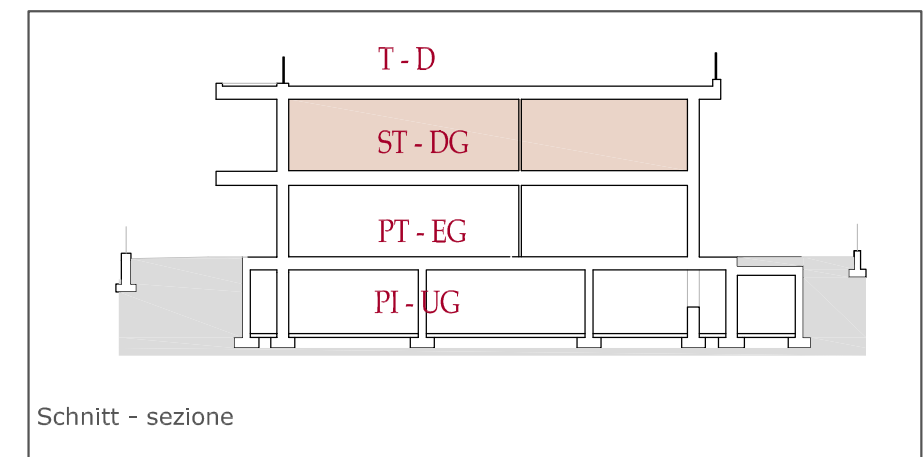
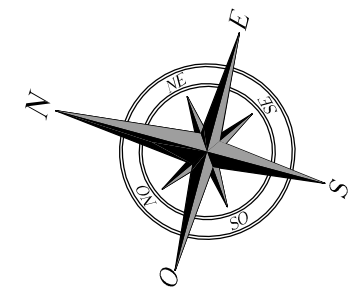
Bardolino

EG - PT
1:100

Beschreibung descrizione	Nutzfläche superficie netta	Verkaufsfläche sup. vendita
Villa	Nr. N° 01 155,52m ²	546,92m ²



Sottotetto - Dachgeschoss



Schnitt - sezione

Villa

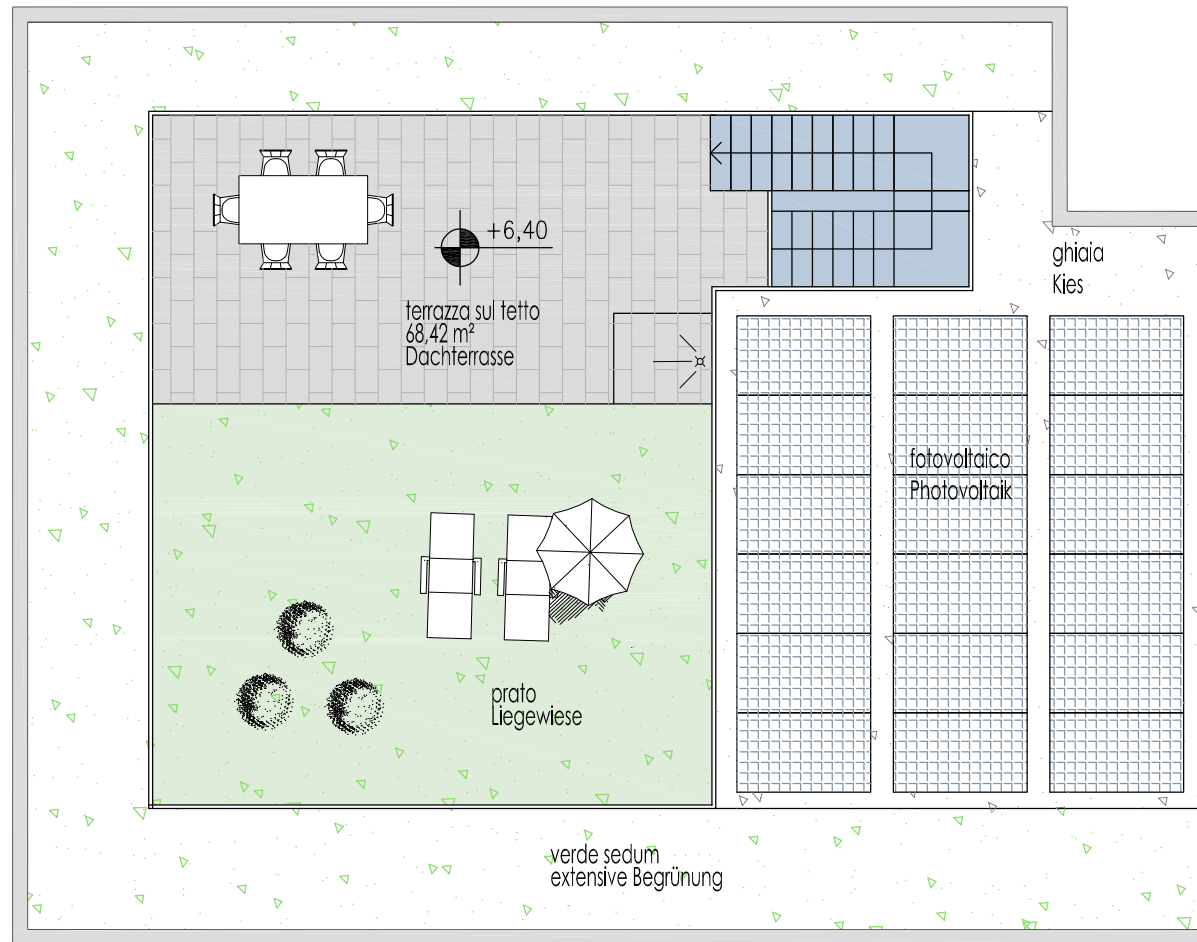
"Montavola"

Bardolino

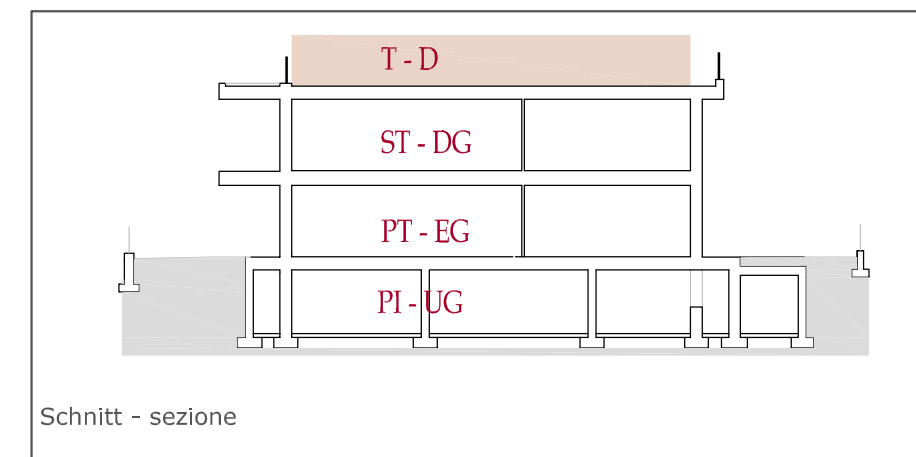
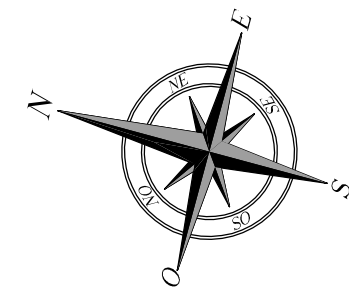
DG - ST
1:100



Beschreibung descrizione	Nutzfläche superficie netta	Verkaufsfläche sup. vendita
Villa Nr. N°	01 155,52m ²	546,92m ²



Tetto - Dach



Villa

"Montavola"

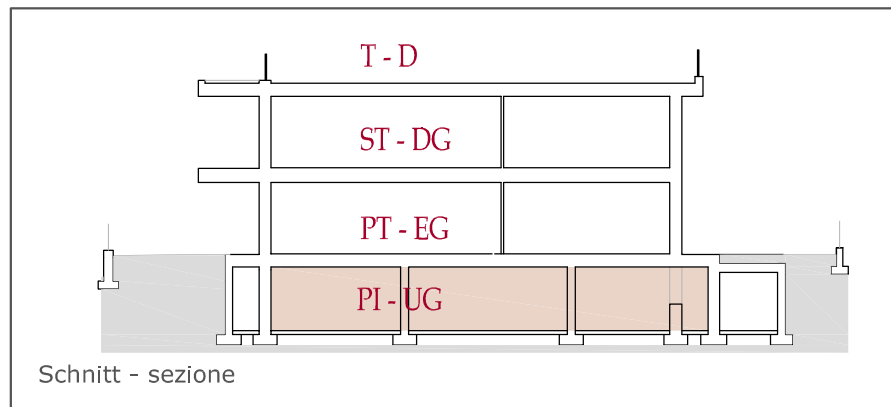
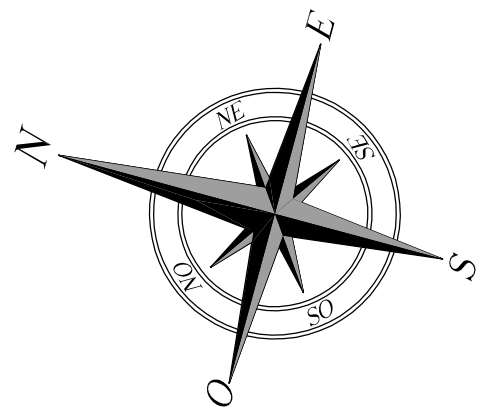
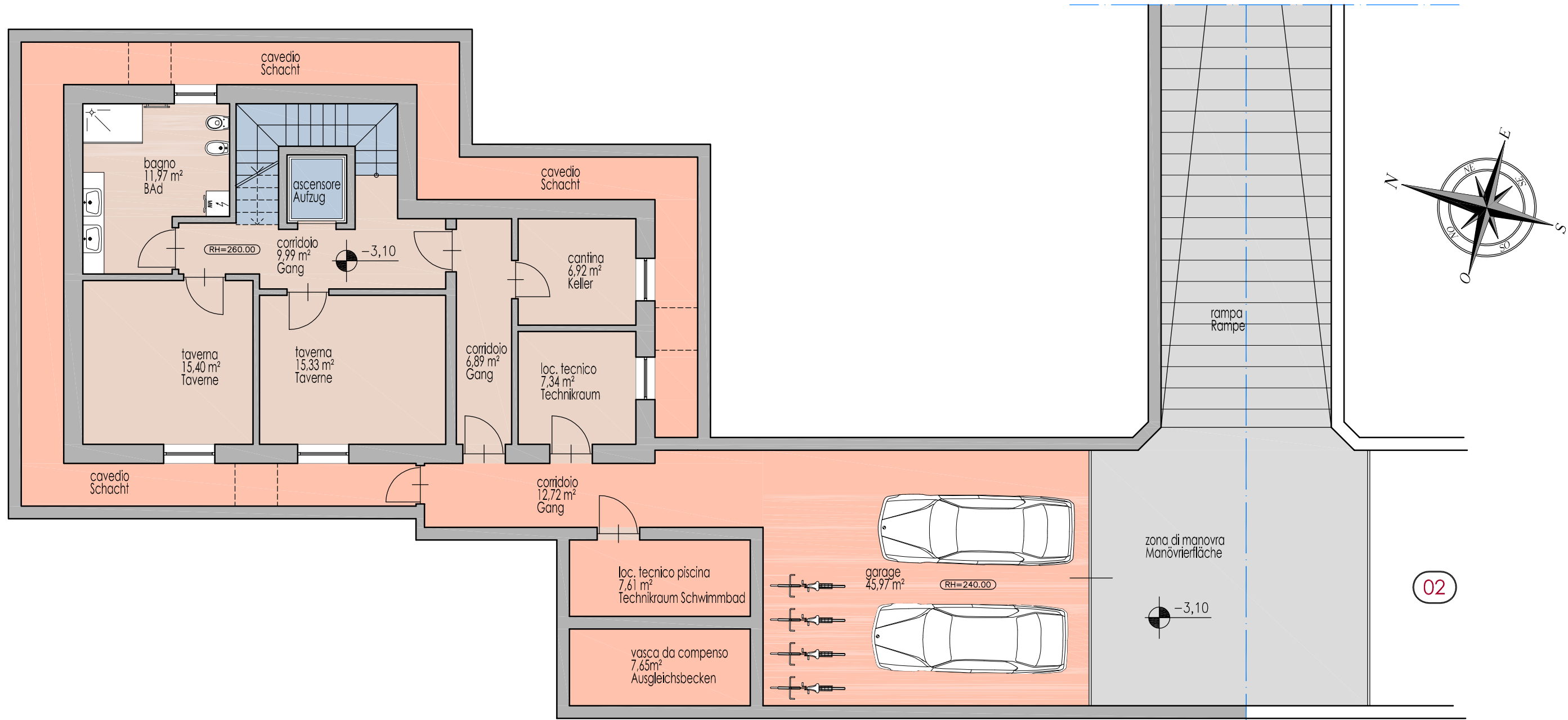
Bardolino

D - T
1:100



Beschreibung descrizione	Nutzfläche superficie netta	Verkaufsfläche sup. vendita
Villa Nr. N°	155,52m ²	546,92m ²

01



Piano interato - Untergeschoss

Villa
"Montavola"
 Bardolino

UG - PI
 1:100

Beschreibung descrizione	Nutzfläche superficie netta	Verkaufsfläche sup. vendita
Villa Nr. N°	01 155,52m ²	546,92m ²